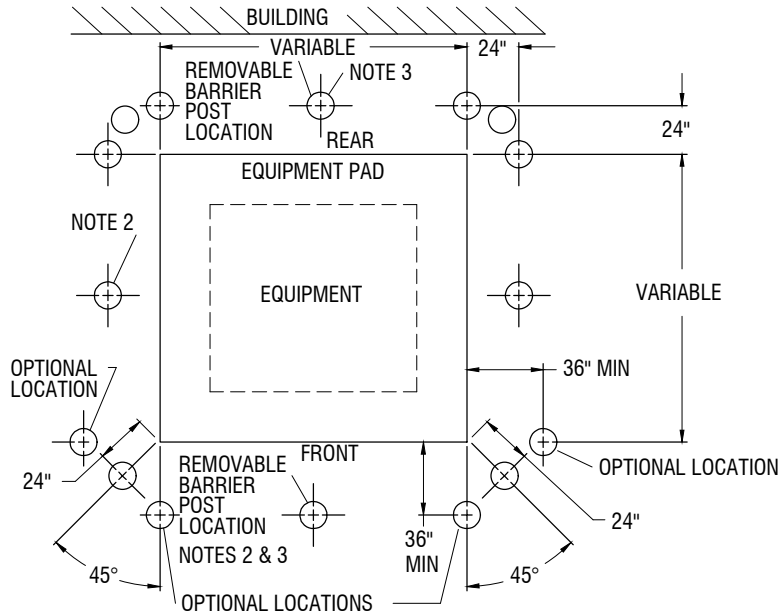


EQUIPMENT CLEARANCE REQUIREMENTS

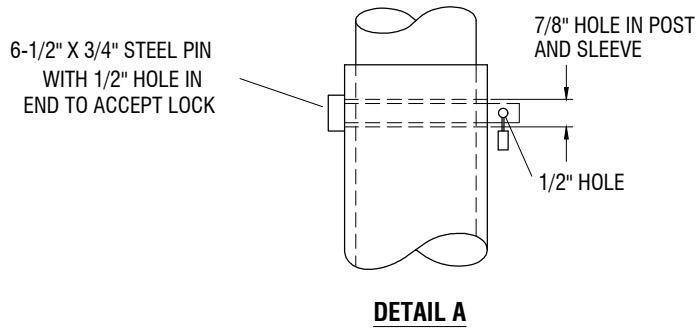
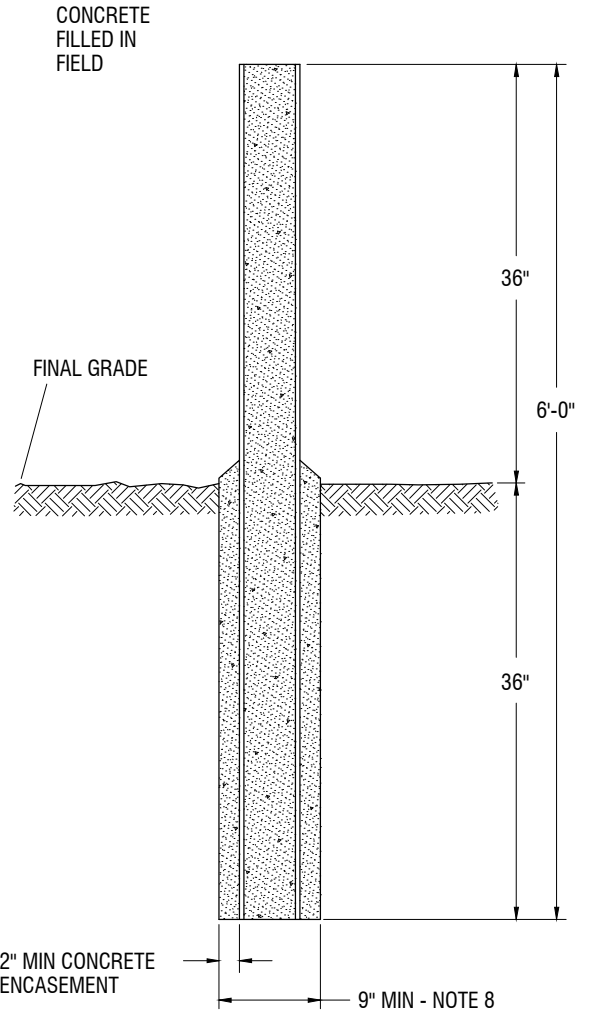
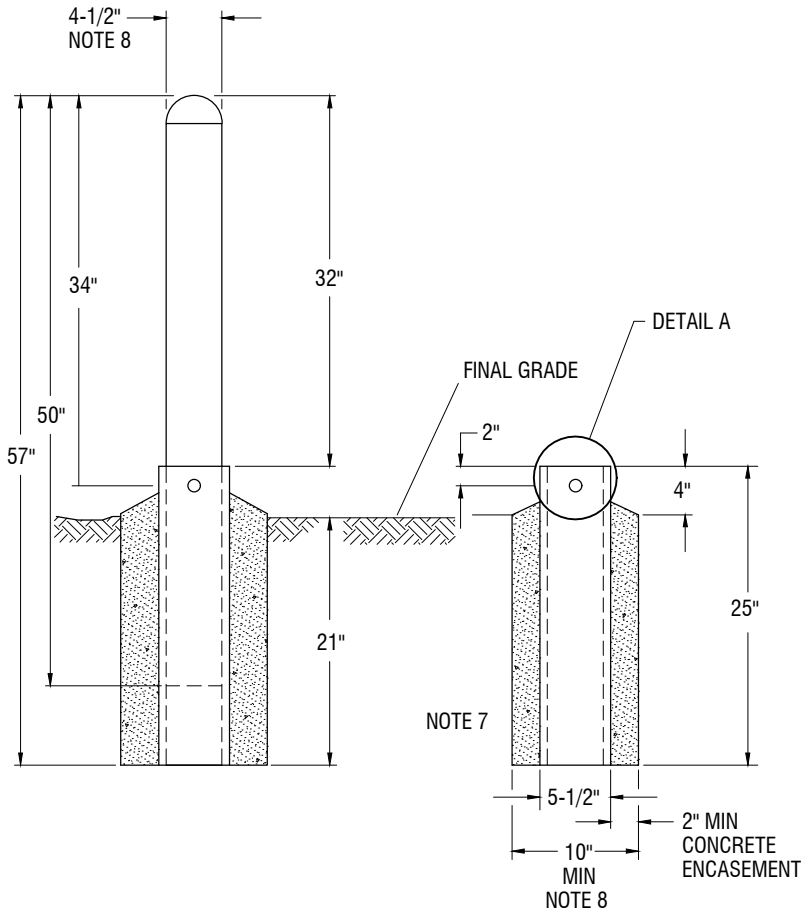
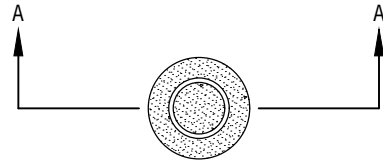
THIS DOCUMENT CONTAINS THE MINIMUM REQUIREMENTS FOR THE CONSTRUCTION AND PLACEMENT OF BOTH FIXED AND REMOVABLE BARRIER POSTS TO PROTECT APS PADMOUNTED EQUIPMENT. PLACEMENT OF BARRIER POSTS SHALL MEET APS EQUIPMENT CLEARANCE REQUIREMENTS. BARRIER POST LOCATIONS SHALL BE APPROVED AND DESIGNED BY APS AND MAY BE MODIFIED BASED ON FIELD CONDITIONS AT THE REQUEST OF THE APS INSPECTOR. FOR BARRIER POSTS IN SERVICE ENTRANCE APPLICATIONS, PLEASE SEE APS ESRM SECTION 300.



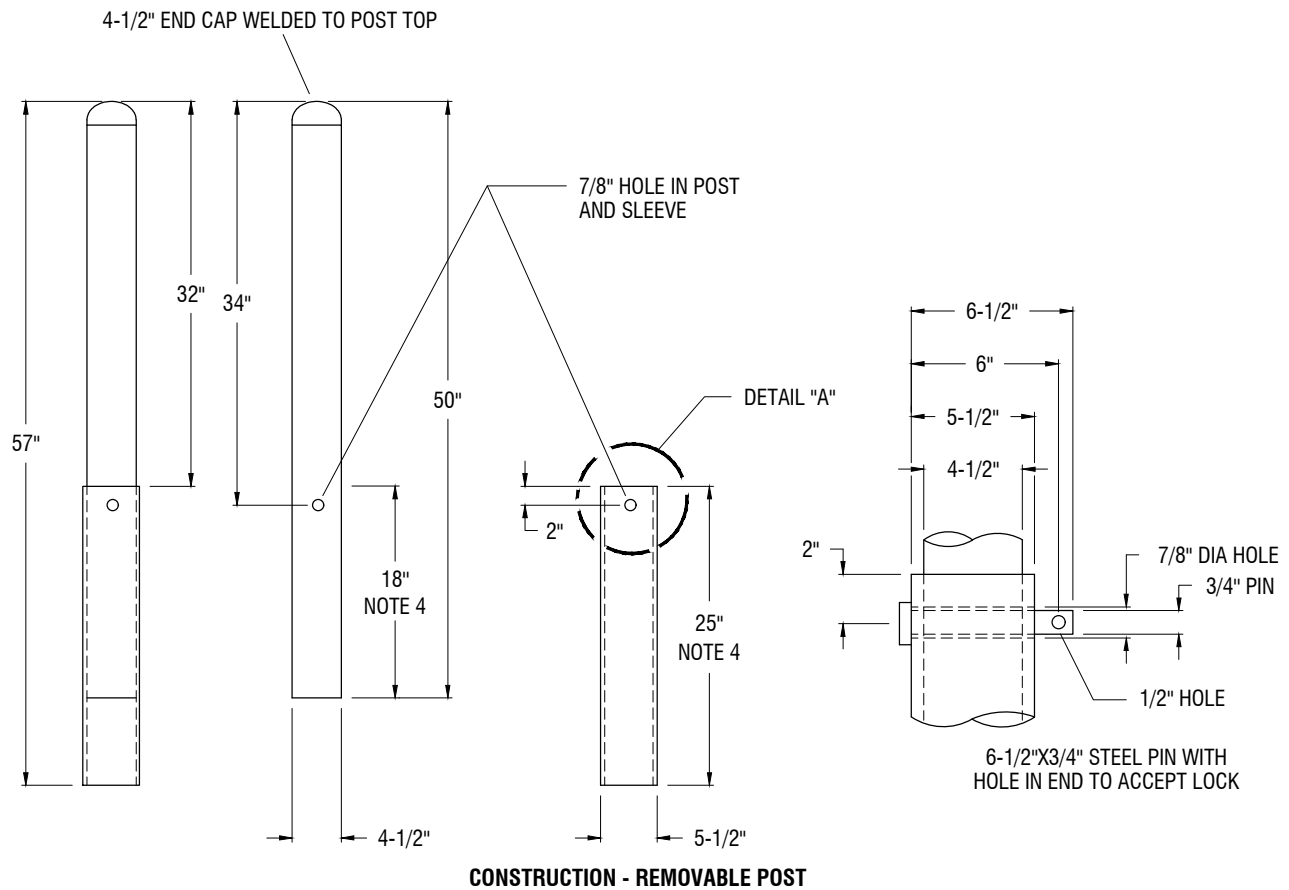
NOTES:

1. A 2-INCH MINIMUM CONCRETE ENCASEMENT IS REQUIRED AROUND THE BARRIER POST BELOW GRADE.
2. USE ADDITIONAL BARRIER POSTS AS REQUIRED TO PREVENT TRAFFIC PENETRATION INTO AREA.
3. CENTER POSTS ARE TO BE REMOVABLE FOR EASY ACCESS.
4. A 36-INCH MINIMUM CLEARANCE IS REQUIRED FROM THE PAD TO THE OPTIONAL FRONT AND SIDE BARRIER POSTS FOR OPENING EQUIPMENT DOORS.
5. CAUTION MUST BE TAKEN WHEN INSTALLING POSTS SO THAT POSTS DO NOT MAKE CONTACT WITH CONDUIT SYSTEM.
6. WHEN USING OPTIONAL LOCATIONS, TWO ADJACENT POSTS ARE REQUIRED.
7. PREMIX CONCRETE IS ONLY AVAILABLE IN 60 LB SACKS. WHEN 90 LB SACKS ARE WANTED, THEY MUST BE SPECIAL ORDERED.
8. THESE BARRIER POST DIMENSIONS ARE A MINIMUM DIAMETER, BASED ON LOCAL TRAFFIC CONDITIONS AND INSPECTOR GUIDANCE, LARGER POSTS UP TO 6" DIAMETER MAY BE REQUIRED.
9. THE BARRIER POST LOCATIONS MAY BE MODIFIED BASED ON FIELD CONDITIONS AT THE INSPECTOR'S REQUEST.

ELECTRIC SERVICE REQUIREMENTS



**SECTION A-A
BARRIER POST DETAIL**



NOTES:

1. BARRIER POST (4") AND SLEEVE (5") TO BE MADE OF SCH 40 STEEL PIPE, ASTM A 53-LATEST REVISION STEEL.
2. DEBURR AND REMOVE ALL SHARP EDGES, GRIND WELD SMOOTH.
3. POST, SLEEVE AND PIN SHALL BE GALVANIZED AFTER FABRICATION. THE GALVANIZING SHALL CONFORM WITH ASTM A 123-LATEST EDITION.
4. AFTER GALVANIZING AND WHEN DRY, THE BOTTOM 18" OF THE POST AND THE ENTIRE SLEEVE SHALL BE TREATED WITH COAL TAR EPOXY 6 TO 8 MILS THICK.
5. BARRIER POST, SLEEVE AND PIN SHALL BE SHIPPED ASSEMBLED. SECURE PIN TO PREVENT LOSS.
6. ALL POSTS SHALL BE GALVANIZED AFTER FABRICATION. THE GALVANIZING SHALL CONFORM WITH ASTM A 123-LATEST EDITION. "ZINC (HOT GALVANIZED) COATINGS ON PRODUCTS FABRICATED FROM ROLLED, PRESSED AND FORGED STEEL SHAPES, PLATES, BARS AND STRIP".

